



**"AS OLD AS THE INDUSTRY
AS MODERN AS THE HOUR"**

A Presentation on RILEY CARS

Produced March 2009
Extra Material added 2020

Presentation Topics

- History of the Riley Company
- Pre War Rileys
- Post War RM Rileys
- BMC Rileys
- Riley Specials
- Riley Race Cars

History of the Riley Company

- Family Business - Weavers based in Coventry from about 1870.
- 1896 The Riley Cycle Company was formed by William, Basil and Herbert Riley.
- William's sons Victor, Allan, Percy, Stanley & Cecil were enthralled by a new fangled invention
- Percy Riley was designer/creator of engines and transmissions. Allan and Stanley were the body designers.

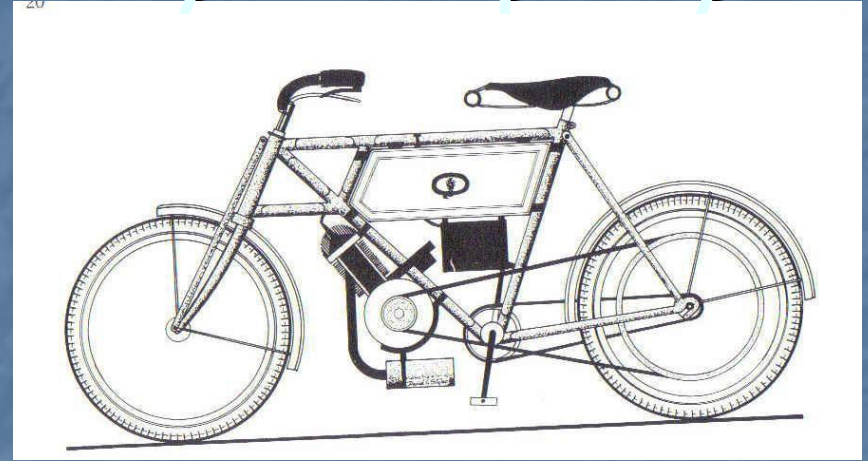
History of the Riley Company

- 1903. Riley Engine Company established to build engines.
- 1912. Riley (Coventry) Ltd formed to build cars
- 1938. Financial difficulties cause Riley family to sell to Lord Nuffield, and Riley becomes part of Morris Motors.
- 1957. Ongoing rationalization of British Motor Industry sees Riley become a brand name within BMC.
- 1994. Riley name included in brands sold to BMW who still own the name

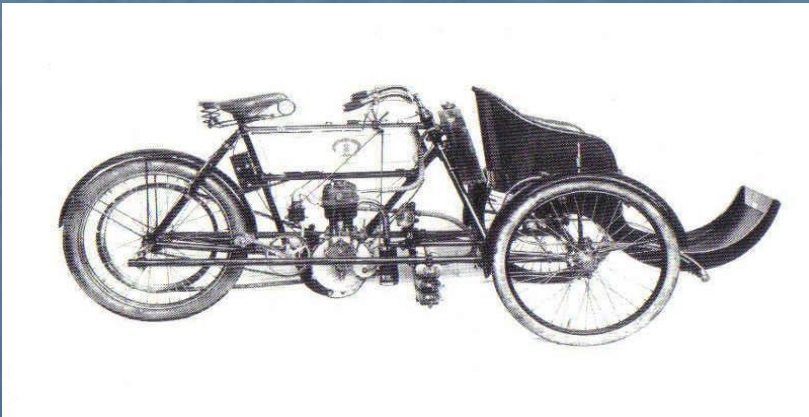
History of the Riley Company



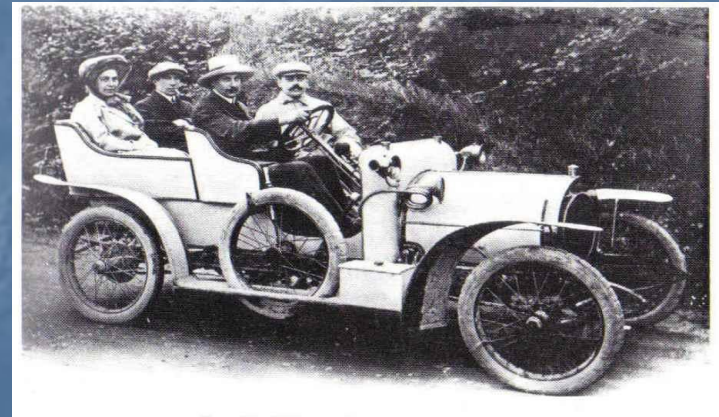
Bicycles 1896-1911



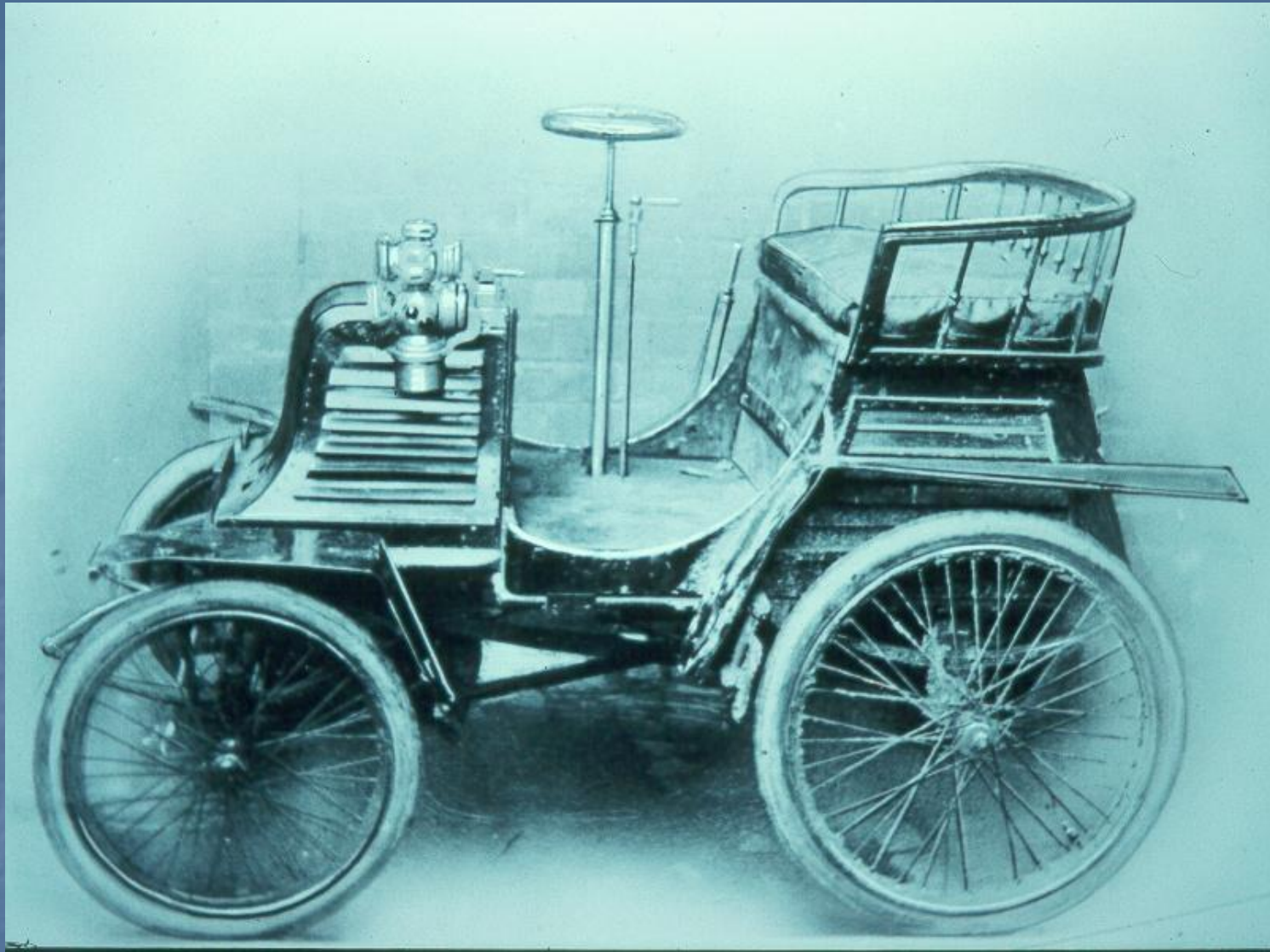
Motor Bicycles 1902-1904



Tricars 1903-1907



V-Twin Cars 1907-1914



1898 - Percy Riley's first car, designed and built whilst still at school.

Riley Tri car British Heritage Motor Museum





1911 2 seater V-twin Torpedo



V Twin Rileys at Coventry Rally 2012

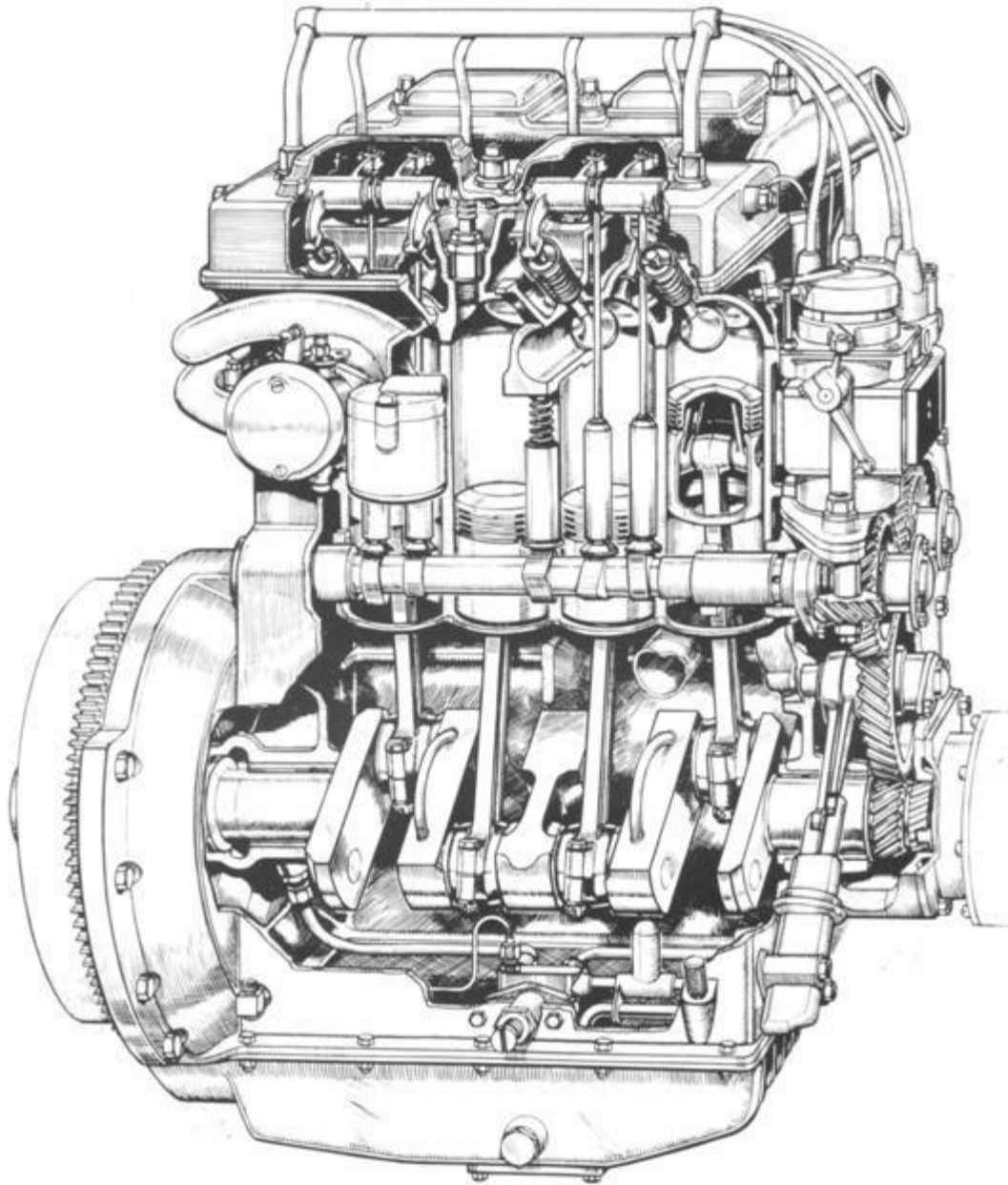
History of the Riley Company

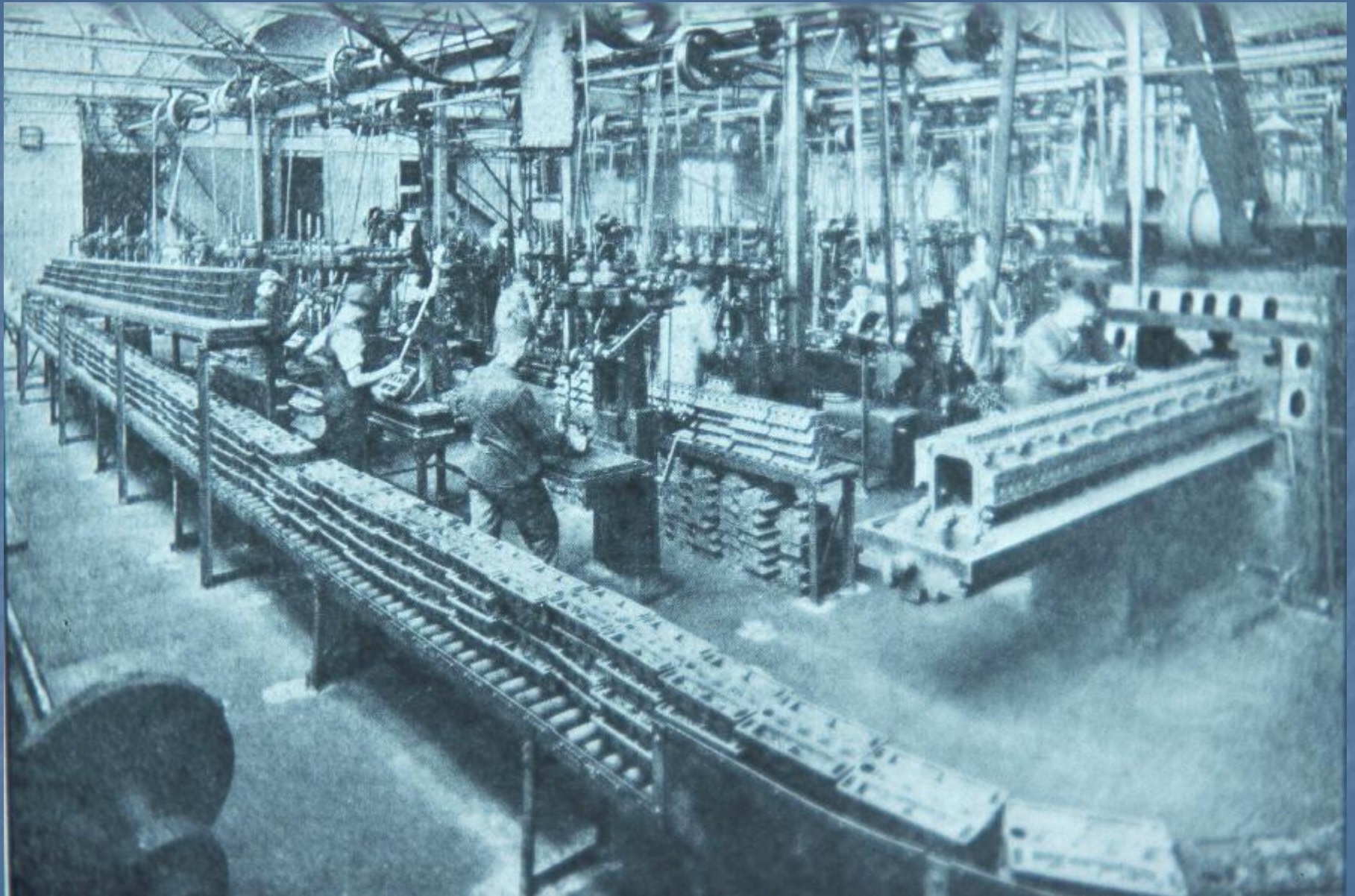
- Around 1907 first production car
- Quickly built a reputation for sound and reliable cars.
- Recommenced manufacturing after the war in 1919 with the Sidevalve range.
- Strength in Innovation and Design.
Examples include:
 - Detachable Wheels – Designed by Riley in 1912 and sold to Rolls Royce, Daimler, Mercedes and many other manufacturers.
 - Constant Mesh Gearbox- Percy Riley designed and patented a constant mesh box with 3 forward and 1 reverse gear in 1904.

History of the Riley Company

- Percy Riley conceived a new light car.
- The Riley 9 was introduced in 1926.
- Revolutionary new motor design
 - Hemispherical combustion chambers.
 - Overhead valves at 45 degrees operated by short pushrods by camshafts set high in the block.
 - Efficiency of overhead cam with serviceability of pushrod design.
 - Established basic design used in Riley motors for 30 years across 4 & 6 cylinder versions with capacities ranging from 1086cc to 2443cc.

Riley "9" Engine





Riley '9' cylinder head manufacturing - 1930's



Riley chassis assembly shop - 1930's

History of the Riley Company

■ Proliferation of Models

- In 1933 the '9' was available in 11 different body styles.
- Riley cars up until 1954 predominantly had coach built timber framed bodies covered in steel, aluminium or fabric built in house, contracted out, or by specialist body builders.
- Manual or pre-selector gear boxes were offered.
- Mid to late 1930's new models featuring one & half litre, two & half litre four cylinder motors, six cylinder motors and even a V8 were added to the range.

Believed to be contributing factors to financial difficulties in 1938.

History of the Riley Company

- Nuffield rescue in September 1938.
- 1939-40 new models 12 & 16 introduced.
- 1945 Riley rose again after WW2 with the RM series.
- 1953 Pathfinder introduced.
- 1957 Pathfinder production ceased. Last car with the traditional Riley engine.
- 1958-1969 BMC badge engineered cars produced.

PRE-WAR RILEYS

- Type- THE SIDE VALVE MODELS
- Built 1913 -1928
- Characteristics
 - Engines - 4 cylinder
 - 11 HP 1498cc SideValve
 - 12 HP 1645cc SideValve
 - Magneto Ignition. Thermosyphon Cooling
 - Gearbox - Riley 4 speed
 - Brakes -
 - **Early Rod operated 2 wheel**
 - **Later Cable operated 4 wheel**
 - Wheels - Artillery or Wire 29"x4.95" tyres
 - Body Styles - Coupe, 2 & 4 Seat Tourers, Saloon, Landauette, Sports
 - Price 1925. Chassis Only £300
Tourer £395 Landaullette £525



Side Valve Tourer



Redwing Sports

PRE-WAR RILEYS

- Type THE RILEY '9' - "The Wonder Car"
- Built 1926-1938
- **Characteristics**
 - **Engines – 4 cylinder 1087 cc OHV**
 - Ignition 1926-1932 Magneto. Thermosyphon cooling
 - Ignition 1933-1938 Coil & Distributor. Thermosyphon cooling
 - **Gearbox**
 - 1926-1932 Riley Silent Third 4 speed
 - 1933 Riley All Helical 4 speed
 - 1934-1938 ENV or Armstrong Siddley Preselector 4 speed
 - **Brakes**
 - 1926-1928 Rod operated 4 wheel 10" drums
 - 1929-1935 Cable operated 4 wheel 13" drums
 - 1936-1938 Rod operated 4 wheel 11" drums
 - **Wheels**
 - 1926-1929 Artillery or Wire 5 stud 19" x 4.50" Tyres
 - 1930-1933 Wire 6 stud 19" x 4.50" Tyres
 - 1934-1938 Wire Centre Lock 19" x 4.50" Tyres

PRE-WAR RILEYS

- The Riley "9" continued
- Built 1926-1938
- Some of the Models available, body styles, and price
 - Chassis only £200
 - "Monaco" Saloon & Fabric Saloon £298
 - "Biarritz" Silent Saloon £325
 - 2 Seater Tourer/Roadster £235
 - 4 Seater Tourer £235
 - "Gamecock" 2 Seater Roadster £298
 - "Lynx" 4 Seater Roadster £298
 - "Ascot" Drophead Coupe £298
 - "Lincock" Fixedhead Coupe £298
 - "Falcon" Saloon £315
 - "Kestrel" Saloon £325
 - "Merlin" Saloon £285
 - "Victor" Saloon £299
 - "Brooklands" 2 Seater Sports £475
 - "Imp" 2 Seater Sports £325



1927 Mark 1 '9' 2-seater with an Australian coach-built body.



1928 '9' Tourer - fabric body by an Australian coach-builder.



1930 Plus series '9' 2-Seater with an Australian coach-built body



1929 Biarritz '9' - fabric body



1929 Monaco Fabric Body



1932 '9' Monaco (Australian coach-built body)



1936 "9" Merlin



1934 '9' Lincock



1934 '9' Kestrel



1933 '9' Lynx



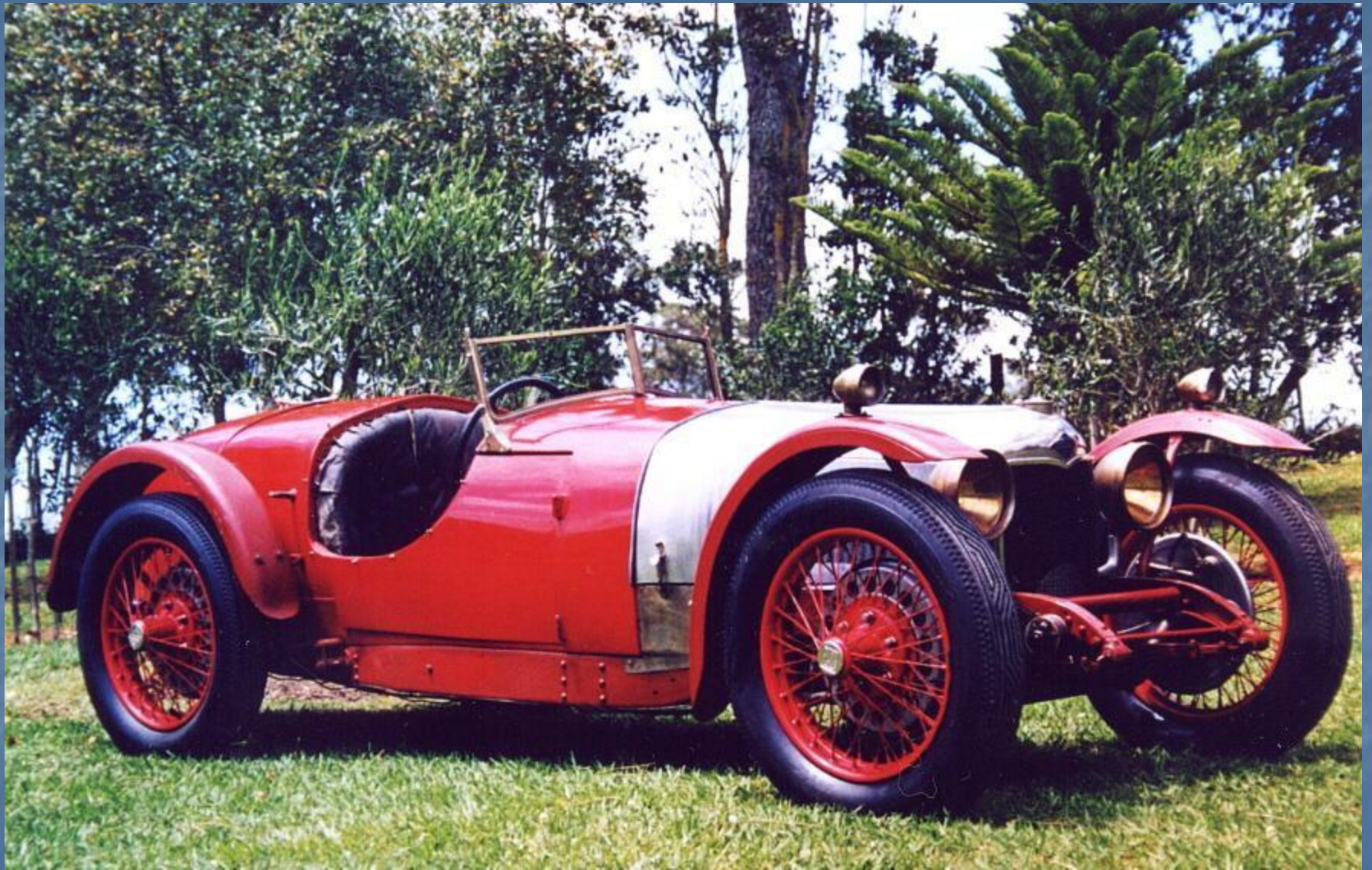
1935 Imp



1932 '9' Gamecock



1933 '9' March Special



1929 '9' Brooklands

PRE-WAR RILEYS

Type- THE SIXES (The Wonder Car + 2)

- Built 1929-1938

- Characteristics

- Engines – 6 cylinder OHV

- 1928-1934 14/6 1633cc

- 1933-1934 12/6 1458cc

- 1935-1938 15/6 1733cc

- Ignition Coil & Distributor . Thermosyphon & pump cooling

- Gearbox

- 1928-1935 Riley Silent Third 4 Speed

- 1933-1934 Riley All Helical 4 Speed

- 1935-1938 Armstrong Siddley Preselector 4 Speed

- Brakes

- 1928-1930 Cable & Rod operated 4 wheel

- 1929-1934 Cable operated 4wheel 13"drums

- 1935-1938 Rod operated 4 wheel 13"drums

- Wheels

- 1928-1933 Wire 6 stud 19"x 5.00" tyres

- 1934-1938 Wire Centre Lock 18" x 4.75" tyres

PRE –WAR RILEYS

Type- THE SIXES (The Wonder Car +2)

•Built 1929-1938

Some of the Models available, body styles, and price

Chassis only	£310
“Stelvio” Fabric Saloon	£495
“Deauville” Saloon	£525
“Tourer” 5 Seat Special	£455
“Alpine” Saloon	£365
“Edinburgh” Limousine	£510
“Lynx” 4 Seater Roadster 14/6	£366
“Ascot” Drophead Coupe	£375
“Lincock” Fixedhead Coupe	£348
“Falcon” Saloon	£365
“Kestrel” Saloon	£380
“Mentone” Saloon	£338
“Adelphi” Saloon	£380
“MPH” 2 Seater Sports	£550



1936 15/6 Adelphi



1935 15/6 Kestrel



1933 Stelvio 14/6

PRE-WAR RILEYS

- Type- THE 12/4
- Built 1935-1938
- Characteristics
 - Engine 1½ litre
 - 1496cc OHV
 - Ignition Coil & Distributor. Cooling Pump & Fan
 - Gearbox
 - Armstrong Siddley Preselector 4 Speed
 - Brakes
 - Girling Mechanical Rod operated 13" drums.
 - Wheels
 - Wire Centre Lock 18" x 4.75" Tyres

PRE-WAR RILEYS

Type - THE 12/4

Built 1935-1938

Some of the Models available, body styles, and price

Chassis only	£275
"Merlin" Saloon	£308
"Lynx" 4 Seater Tourer	£335
"Falcon" Saloon	£315
"Kestrel" Saloon	£350
"Mentone" Saloon	£338
"Adelphi" Saloon	£350
"Victor" Saloon	£325
"Sprite" 2 seater sports	£450



1935 12/4 Lynx



1935 12/4 Kestrel - four light sedan



1936 12/4 Falcon



1938 12/4 Kestrel - six light sedan



1937 12/4 Sprite

PRE-WAR RILEYS

- 8/90 - capacity of two Riley '9's in a 90 degree V - (the Silver Streak)
- Built 1935-1938
- 8-90 2178cc OHV 3 camshafts
- Armstrong Siddley Preselector gearbox
- Rod operated brakes 14" drums
- Wire Wheels 18" x 5.25" tyres
- Models/Price – Chassis £375
 - Adelphi £450, Kestrel £450
 - Also the Autovia which was an offshoot company £955



1938 Autovia V8 – Offshoot company of Riley



Riley V8 Engine

ADELPHI 8/90



PRE-WAR RILEYS

- The Big Four (the Blue Streak)
- Built 1938
- 4 cylinder 2443cc OHV
- 3 speed dual overdrive gearbox
- Rod operated brakes 16" drums
- Wheels - Dunlop centre lock – then
- Magna Wire Wheels 18" x 5.25" tyres
- Models/Price – Adelphi £405, Kestrel £415
 - Touring Saloon £405, Lynx Tourer £405



1938 Big Four (2443cc)
Continental Touring Saloon



1938 Big Four (2443 cc)
Blue Streak Kestrel

PRE-WAR RILEYS

- Type - NUFFIELD
- Built 1939-1940
- Characteristics
 - Engines
 - Twelve 1496cc OHV
 - Sixteen 2443cc OHV
 - Gearbox
 - Four speed manual
 - Brakes
 - Girling mechanical rod 12:- 13" drums 16:- 14" drums
 - Wheels
 - Pressed steel disc bolt on 12:- 16" x 5.75"
 - 16:- 16" x 6.25" tyres

Three Nuffield Rileys 12 Saloon, 12 Drophead, 16 Saloon



1939 Riley 12



1939 Nuffield Riley 12 Drophead



POST – WAR RILEY'S

- Types -THE RM SERIES

- Built 1945- 1957

- Characteristics

- Engines

RMA, RME – 1½ litre	1496 cc
RMB, RMF – 2 ½ litre	2433 cc
RMC (Roadster), RMD (Drophead)	2433 cc
(Pathfinder) (RMH)	2433 cc

- Gearbox

- 4 speed manual

- Brakes

- RMA,RMB,RMC,RMD Hydro- Mechanical
- RME,RMF,RMH Hydraulic

- Wheels

- RMA, RME Steel Discs 16" x 5.75" Tyres
- RMB,RMC,RMD, RMF Steel Discs 16" x 6.00" Tyres
- RMH Steel Discs 16" x 6.50" Tyres

POST – WAR RILEY'S

Types -THE RM SERIES

Built 1945- 1957

Models available, body styles, and price.

RMA, RME 1½ litre Saloon	1945	£555	1955	£ 800
RMB, RMF 2½ litre Saloon	1946	£880	1953	£1055
RMC 2½ litre Roadster	1948	£880	1951	£ 958
RMD 2½ litre Drophead	1948	£950	1951	£ 958
RMH Pathfinder Saloon	1953	£975	1957	£ 940

RM series production 1945-1957

Year	1 1/2 RMA/E	2 1/2 RMB/F	Roadster RMC	Drophead RMD	Pathfinder RMH	Totals
1945	8					8
1946	1,314	76				1,290
1947	2,720	613				3,333
1948	1,925	1,307				3,232
1949	1,498	1,238	259	20		3,015
1950	1,356	1,616	241	375		3,588
1951	1,164	1,345	7	105		2,621
1952	1,050	1,059				2,109
1953	1,139	699				1,838
1954	1,747				889	2,636
1955	29				2,719	2,748
1956					1,477	1,477
1957					67	67
Totals	13,950	7,953	507	500	5,152	28,065

Australian Imports

Total new RM series Riley registrations in Australia: 4,280 (Almost 16% of all RM production: caution - shipping time delayed registration, causing some overlap between years)		
1940-5	32	
	RM imports to Australia	Percentage of total production
1946	3	0.2%
1947	54	0.3%
1948	366	11.3%
1949	860	28.5%
1950	1135	31.6%
1951	797	30.4%
1952	309	14.6%
1953	113	6.2%
1954	147	5.6%
1955	295	10.7%
1956	165	11.7%
1957	2	
1958	0	
1959	2	



RMA 1½ litre Saloon 1945-1953



RMB 2½ litre Saloon 1946-1952



RMC 2½ litre two or three seat Roadster 1948-1951



RMD 2½ litre Drophead Coupe 1948-1951



RME 1½ litre Saloon 1953-1955



RMF 2½ litre Saloon 1952-1953



RMH Pathfinder 2½ litre Saloon 1953-1957

POST WAR RILEYS

- Types -THE BMC SERIES
- Built 1957-1969
- Characteristics
 - Engines
 - TwoPointSix Saloon BMC "C" series motor 2639cc
 - OnePointFive BMC "B" Series motor 1489cc
 - 4/68 Saloon BMC "B" series motor 1489cc
 - 4/72 Saloon BMC "B" series motor 1622cc
 - Elf Saloon BMC "A" series motor Mk1 848cc Mk2/3 998cc
 - Kestrel Saloon BMC "A" series motor Mk1 1098cc Mk2 1275cc
 - 1300 Saloon BMC "A" series motor 1275cc
 - Gearbox
 - All cars fitted with BMC 4 speed manual synchromesh gearbox
 - Automatic transmission extra on Two-Point Six 4/72, Elf, Kestrel & 1300
 - Brakes
 - All cars fitted with hydraulic 4 wheel drum brakes

POST WAR RILEY'S

- Types -THE BMC SERIES
- Built 1957-1969
- Models available and Price

TwoPointSix Saloon 1959	£940 Auto + £115
OnePointFive 1965	£580
4/68 Saloon 1961	£725
4/72 Saloon 1968	£791 Auto + £68
Elf Saloon 1969	£550 Auto + £75
Kestrel Saloon 1967	£692 Auto + £75
1300 Saloon 1969	£800 Auto + £75



OnePointFive Saloon 1957-1965



4/68 and 4/72 Saloons 1959-1969



Riley Elf Saloon 1961-1969



Riley Kestrel 1100 & 1275 became 1300 Saloon 1965 – 1969
(Last Riley model produced)



Riley Two Point Six BMC 1957-1959

RILEY REPRODUCTIONS, SPECIALS & RACE CARS

- Road Specials and Racing Specials have been developed since the 1920's
- Most famous special The "White Riley" which developed into the ERA

- Traditional Rileys e.g. Brooklands enjoyed great racing success. Winner Australian GP in 1933



MPH Reproduction - 1934 Chassis 6 cylinder engine



1949 RMB DROPHEAD REPRODUCTION



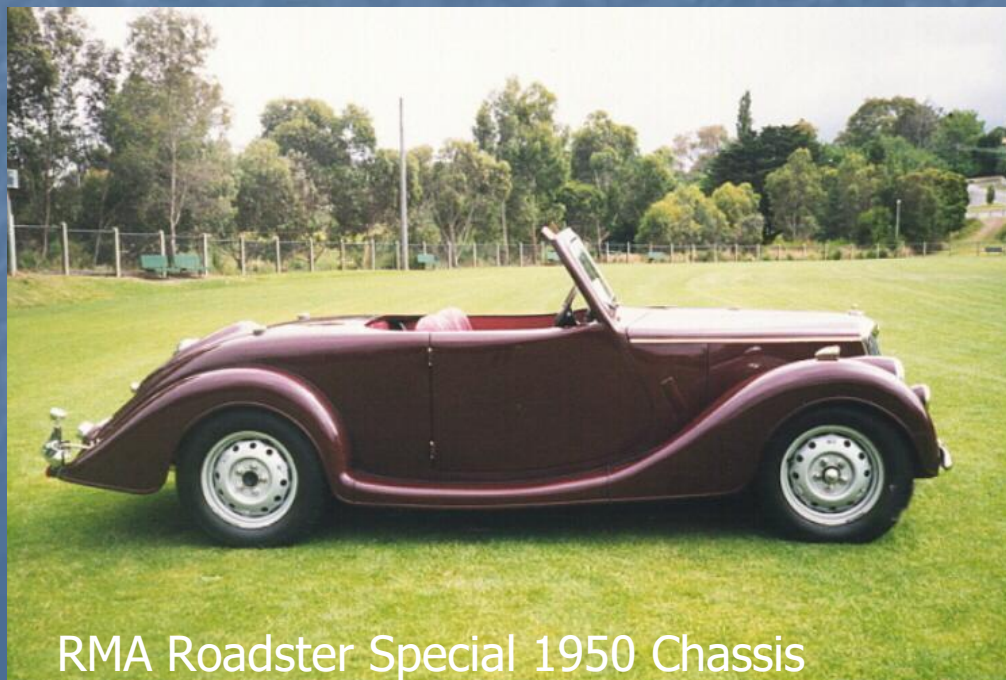
Riley '9' two seat Tourer - fabric bodied Special 1929 Chassis



Riley '9' Sports Special 1929 Chassis



RMA Roadster Special 1951 Chassis



RMA Roadster Special 1950 Chassis



RMB Roadster Special - 1949 Chassis



1935 12/4 SPECIAL



1930 "9" Racing Car with 12/4 Engine TROG



1948 RMB Based Racing Car



1939 12hp Racing Car



1933 6 Cylinder Racing Car



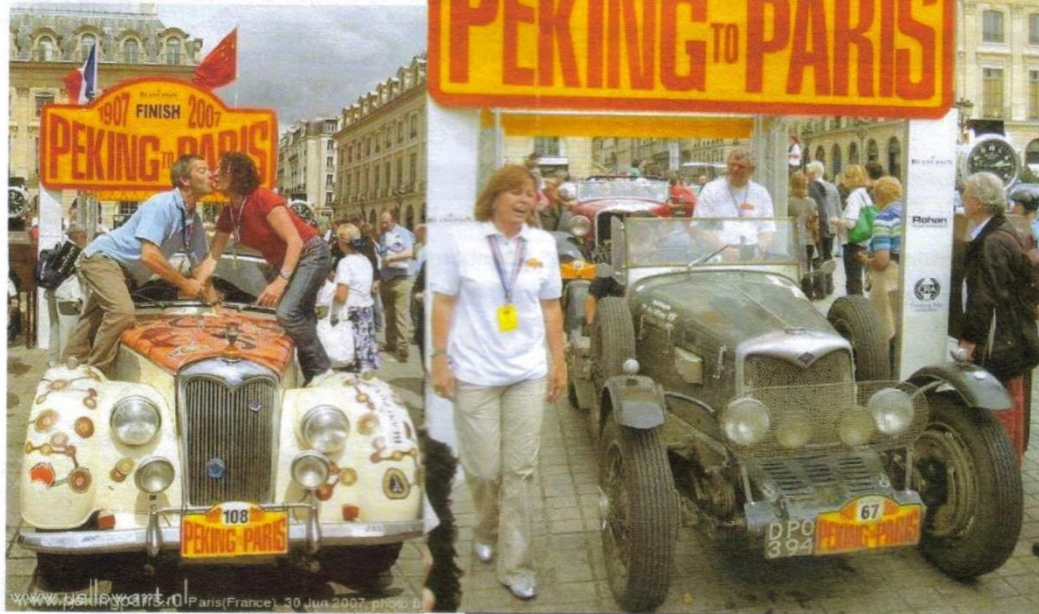
The White Riley 1933 Chassis 6 cylinder Engine

A MEMBER'S ADVENTURE

Paris, June 30th

Left: the Wilkinsons and their 1951 RMB (4th overall, Gold medal)

Right: Williams and Davies 16/4 Special (12th overall, Gold medal)



Congratulations to Michael & Anne Wilkinson (1951 RMB) and Roy Williams and Andrew Davies (16/4 Special) on winning gold medals in the Peking – Paris Rally

RILEY MOTOR CLUB OF VICTORIA

Host Club for Touring Tasmania 2005 (National Rally)

14 Day Tour of Tasmania 67 Riley's 1928 to 1969 models 177 people



RILEY MOTOR CLUBS

- First Club established in the UK in 1926
- By 1930 said to be the largest one make car club in the world.
- Clubs now exist in many countries.
- Separate Clubs in each Australian State.
- Excellent spare parts service.
- 2023 a big Riley year

2023

- 125 Years since first Riley car
- 70 Years Pathfinder
- 90 Years Kestrel, Falcon, Lynx, Lincock
- 65th Birthday of Riley Motor Club of Victoria.